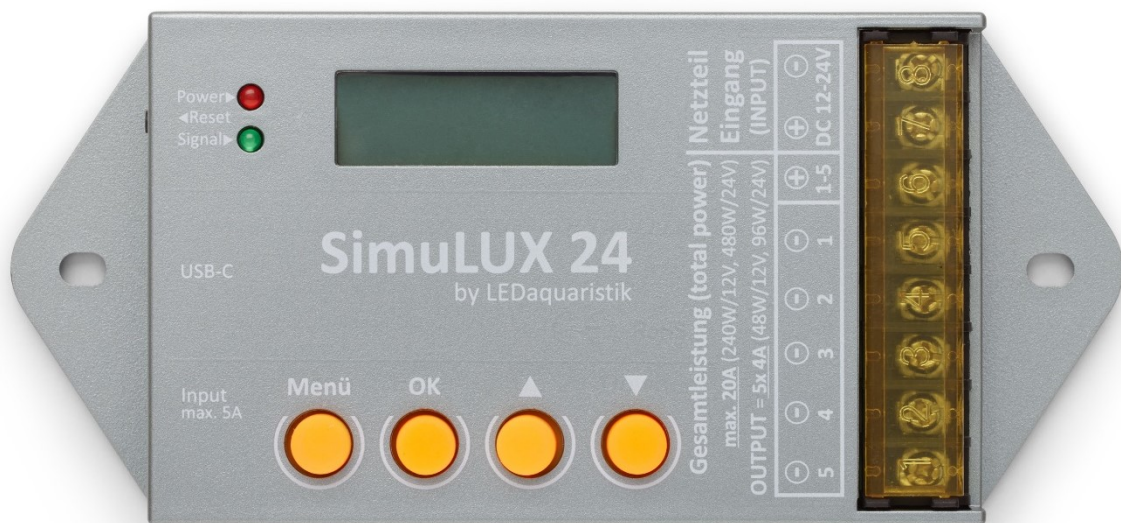


SimuLUX 24

Programmable LED Light Controller



General information:

SimuLUX 24 is a microprocessor-controlled, freely programmable daylight simulator (LED controller) with 5 output channels (12-24V). Each channel can be individually programmed and controlled. The maximum connected load is 48W per channel and requires an appropriately dimensioned power supply unit. Programming and updates are done via USB connection to a Windows PC. Via a 24-hour menu, you can programme and simulate your own individual daily routine according to the LED light colours available.

Dawn
Sunrise
Clouds
Midday sun
Dusk
Sunset
Moonlight



The simulator also offers the option of saving several ready-made daily schedules and starting them at the touch of a button. The menu navigation on the device is supported by a display and also serves to show the current time.

The controller is programmed using the free SimuLUX 24 software. (Microsoft Windows required)

To download the software, please scan the QR code or follow this link:

<https://www.ledaquaristik.de/en/SimuLUX24>

The download can be found below the product description and includes the SimuLUX 24 software for 32-bit and 64-bit Microsoft Windows operating systems, as well as some sample files and the operating instructions.

Technical data:

- Programmes adjustable in 24h time window

- **Attention:**

- Current SimuLUX 24 control unit (gray) with up to **48** switching points per 24h cycle
- Predecessor model SIMU-LUX control unit (blue) with up to **20** switching points per 24-hour cycle

If additional switching points are programmed, this will result in an incorrect program sequence.

- 5 channels/outputs each with 4A power (max. 20A)
- 12V-24V voltage (12V=240W / 24V=480W)
- Smooth PWM dimming
- Power-Off Memory function (last value is output again when switching on)
- Digital display
- Input and output via screw terminals (incl. contact protection)
- Delivery without USB-C cable
- Software via download, see QR code or link on page 2
- Dimensions: 112 x 69 x 21 mm
- Weight: 0,2kg

The device must not be placed on or inside the aquarium cover!

Connections on the device



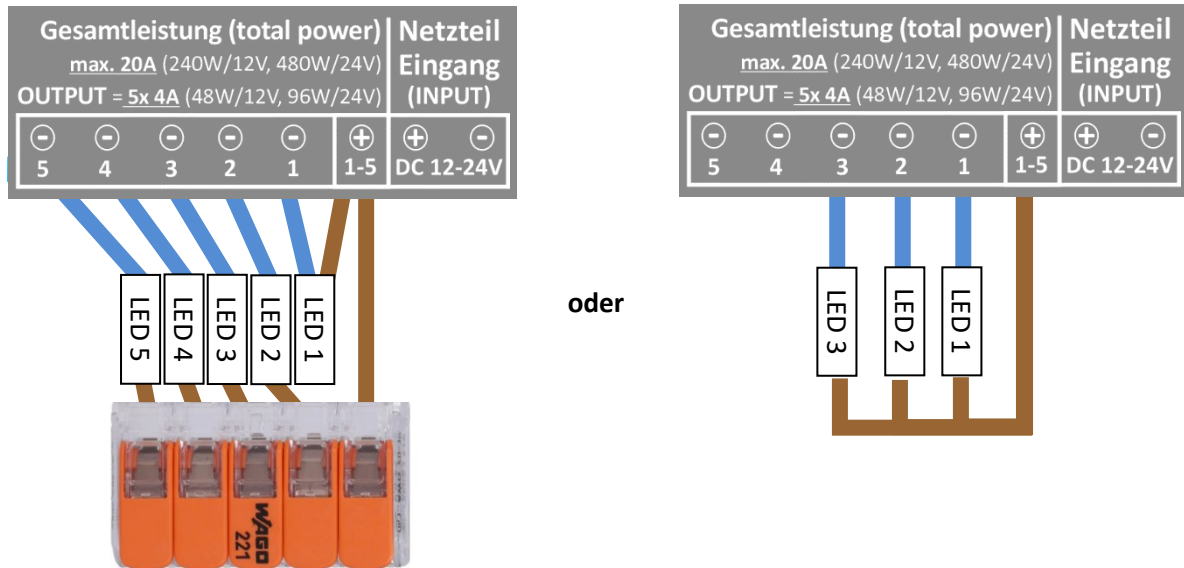
- On the left, the reset button to restart the control unit in the event of a crash.
- In the middle, the USB-C interface for connecting the control unit to the PC via USB cable. 3.
- Power: connection for power supply units **up to max. 60W** power with corresponding plug (not recommended).

But ideally, you should connect your power supply unit to the opposite side of the power supply unit input:

Connection to the PC for programming

The connection to the PC/notebook is always made with a USB-C cable. No additional power supply to the SimuLUX 24 is required for the programming itself. However, if the lighting is also to be tested during programming, make sure that a USB connection is established first and only then an LED power supply unit is connected to the SimuLUX 24. Otherwise, connection problems may occur between Windows and the control unit and the device may not be recognized.

Connection of power supply (LED power supply unit) and lighting



Disconnect the power supply while connecting the LED bars!

Connecting the lighting to the output channels (OUTPUT)



The plus poles (brown or red depending on the LED model) of all the lights are connected together here:

Tip: The enclosed Wago plug-in terminal is the easiest way to connect the relevant cables. The operating lever is opened until it clicks into place, the stripped conductor is inserted and the lever is returned to its original position - done!



The negative poles (blue or black) are each connected to the desired output channel (1-5)

Anschluss der Stromversorgung



LED power supplies are connected to the +/- terminals on the power supply input. We recommend only using power supply units without round plugs to ensure safe and reliable operation.

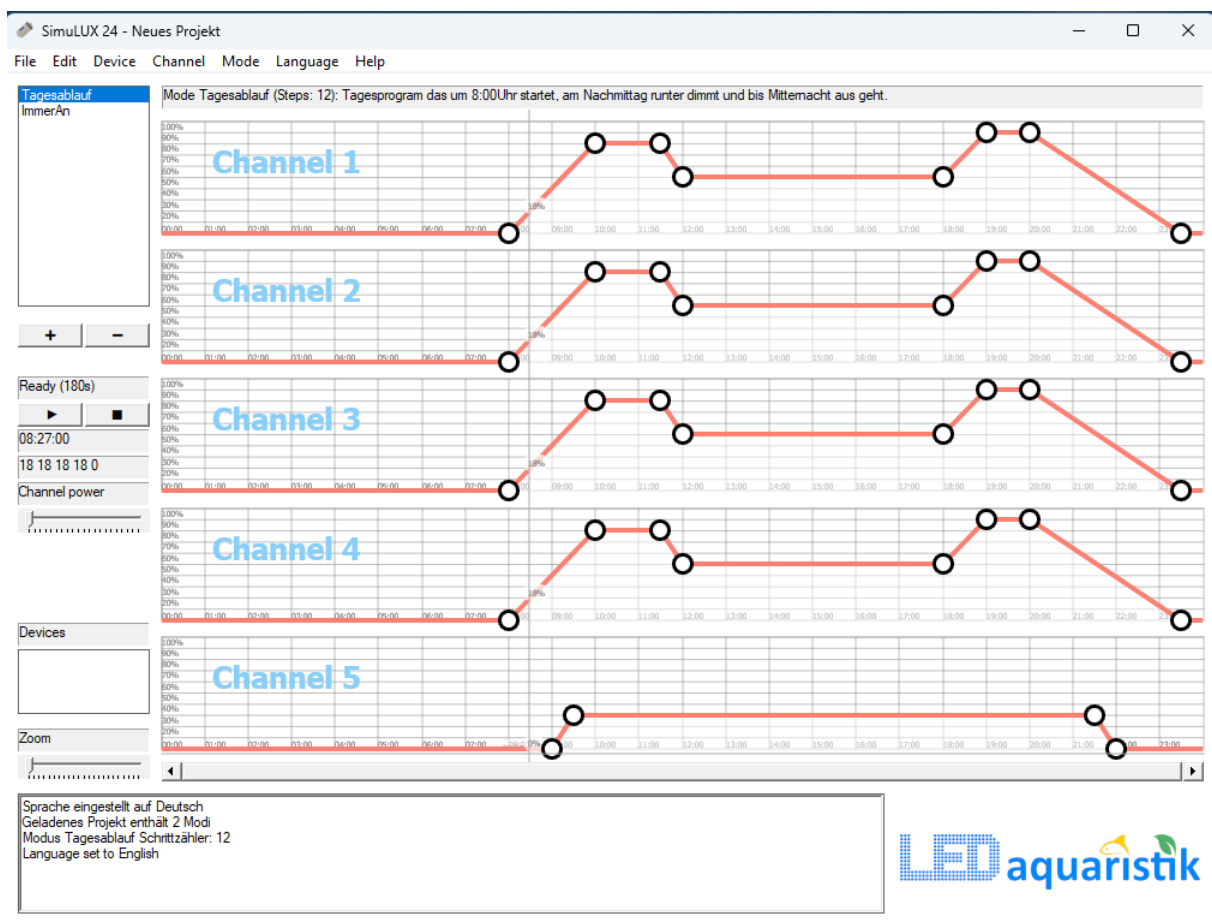
Alternatively, a power supply unit with a round plug can be used at the opposite connection, here max. 60W 12VDC. Only one power supply unit can be used in total!

Software installation

Install the SimuLUX 24 software for programming your SimuLUX 24 day simulation. Software and sample programs are available via download at: <https://www.ledaquaristik.de/en/SimuLUX24>
System requirements: Microsoft Windows, USB interface

Select the 32-bit or 64-bit version suitable for your operating system and execute the file **SimuLUX24_LEDaqua_Setup(...).msi** and follow the instructions during installation.

You can then start the software and will already find a demo programme that you can use immediately or adapt according to your own ideas.



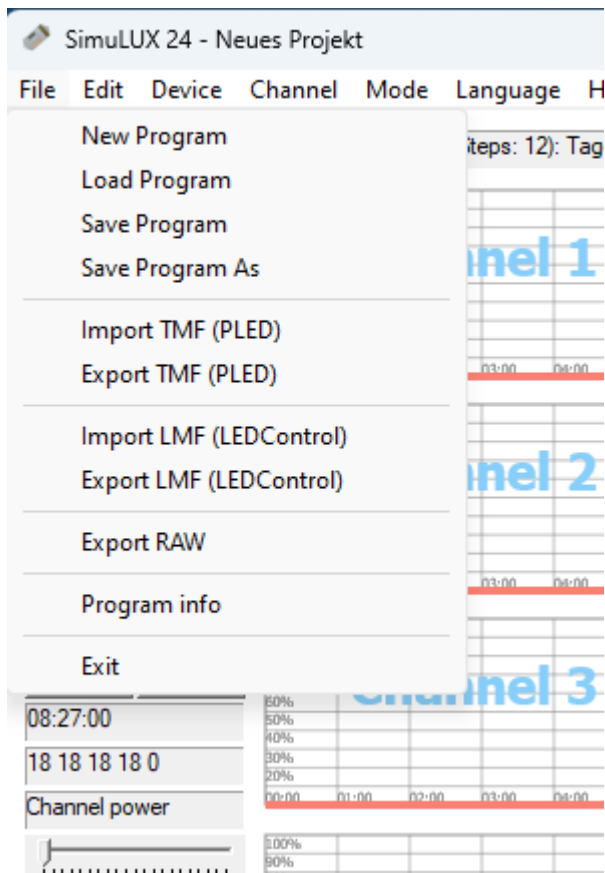
A separate diagram with a lighting curve is available for each channel. The individual switching points can be moved by drag & drop or additional switching points can be added by double-clicking. The operation is therefore very simple and largely self-explanatory.

The settings can then be saved under the menu item File.

Attention:

- o Current SimuLUX 24 control unit (gray) with up to **48** switching points per 24h cycle
 - o Predecessor model SIMU-LUX control unit (blue) with up to **20** switching points per 24-hour cycle
- If additional switching points are programmed, this will result in an incorrect program sequence.**

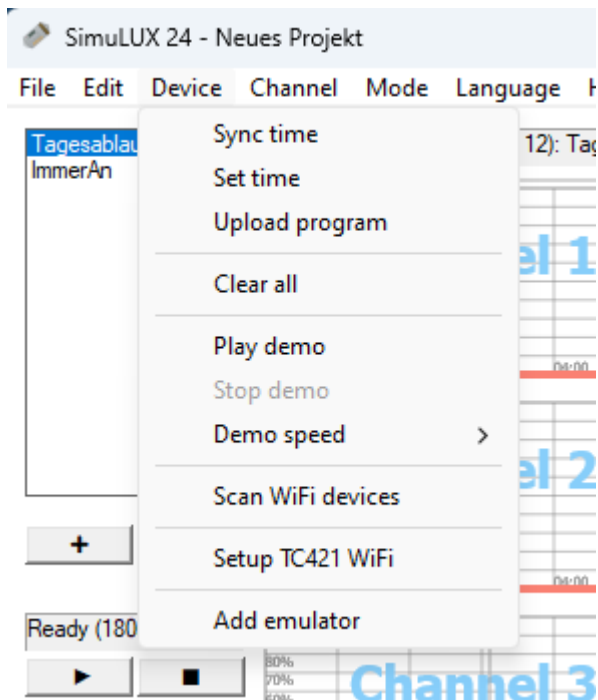
Sample programs



Under the menu item *File*, you also have the option of opening further sample programs via *Load Program*, which we have already prepared for various lighting products from our shop. (See *Download/ZIP folder*). Nevertheless, it is recommended that you adapt them individually to your needs.

It is also possible to import any TMF programs from the previous PLED software.

Settings, test and upload



After the device has been connected to the PC via USB, the time should be updated with the SIMU-LUX controller by synchronizing the time.

A program can be tested in a fast run, via *Play demo* the program runs in a fast run, the playback speed can be adjusted via *Demo speed*.

When the program is finished and ready for use, it is transferred to the SIMU-LUX device by uploading the project. (USB connection required)

New/additional projects can be added via the + button. All projects listed there are transferred to the device. The menu buttons on the device can then be used to switch, e.g. from *Daily routine* to *AlwaysON* for spontaneous maintenance work on the aquarium.

Function buttons on the device



The function buttons can be used to manually switch between the programs transferred to the device. These buttons cannot be used to program or change the program sequence.

Service

Do you want your lighting control system to be ready to go straight away?

And exactly according to your ideas?

Then the "Programming Service" is exactly what you need!



Depending on the selection and controller in your order, we will program the lighting control system with a daily schedule (Mon-Sun same schedule plus time and brightness).

You can either send us detailed specifications for your desired programming, or we can program the controller according to our experience and your other order scope with what we consider to be an optimal lighting program. For the latter, we only need rough information on the desired switch-on and switch-off times.

Click here for the product: www.ledaquaristik.de/artikelnummer/098-0007

